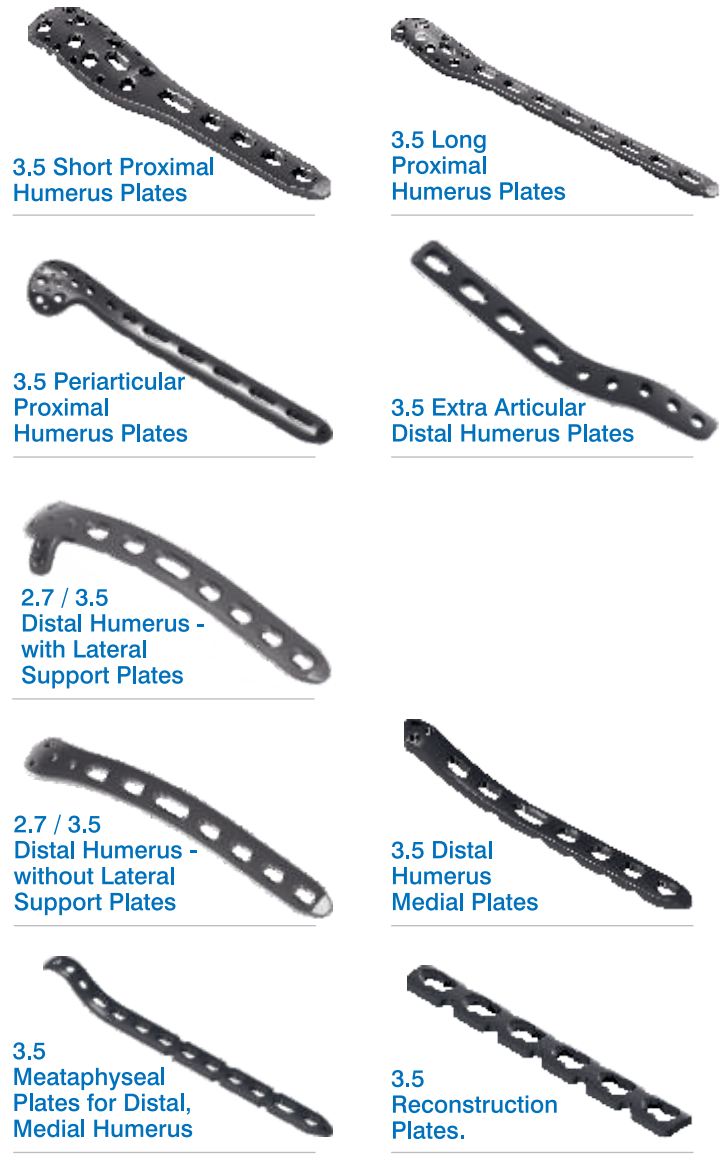


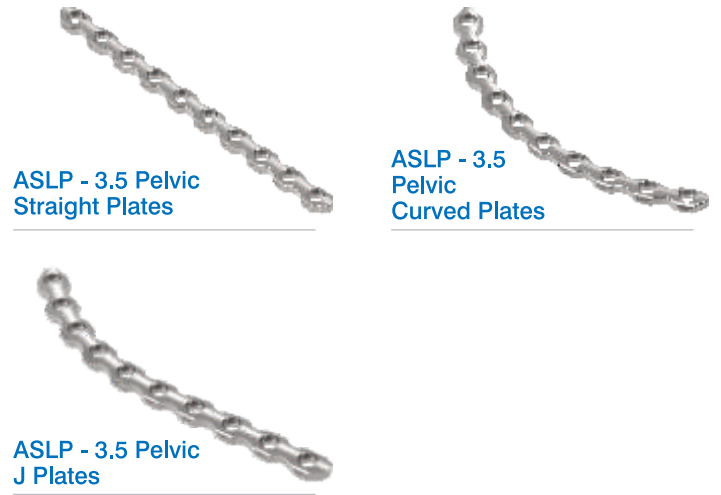
## Clavicle



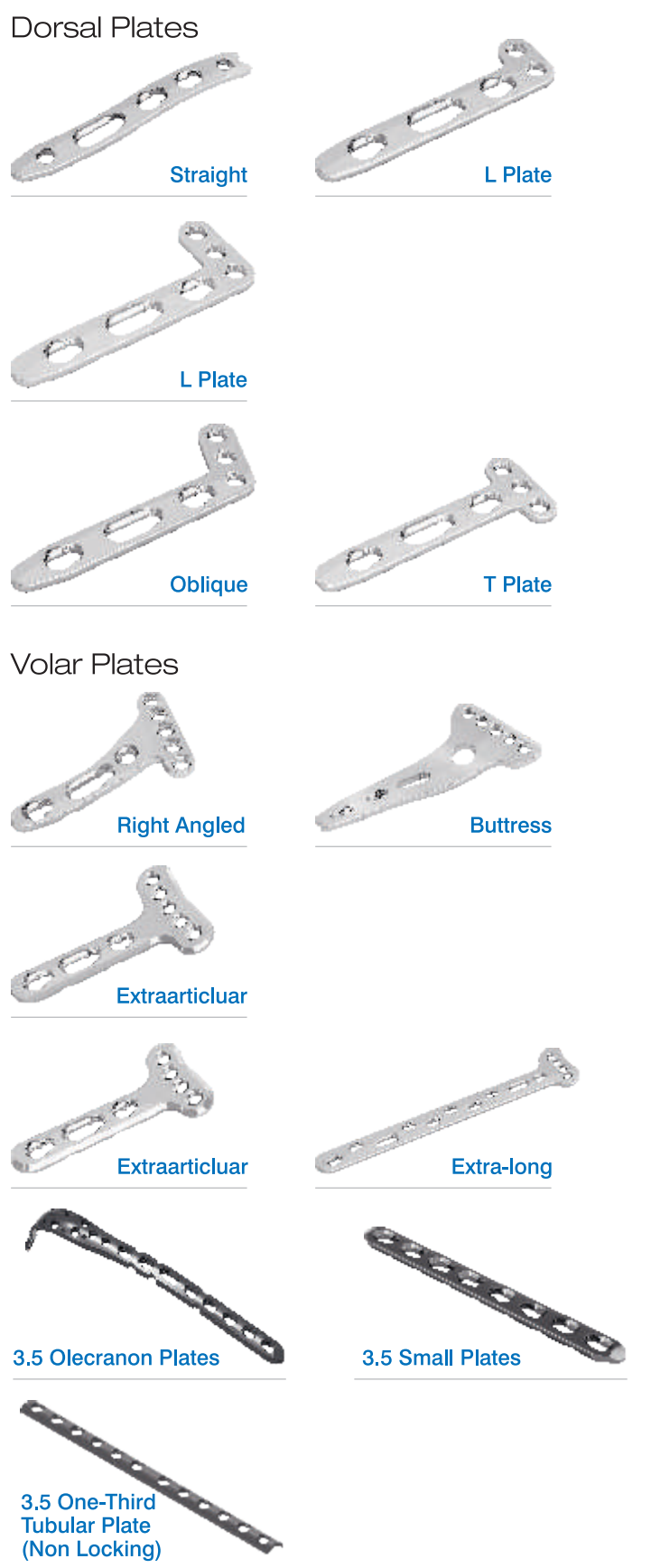
## Humerus



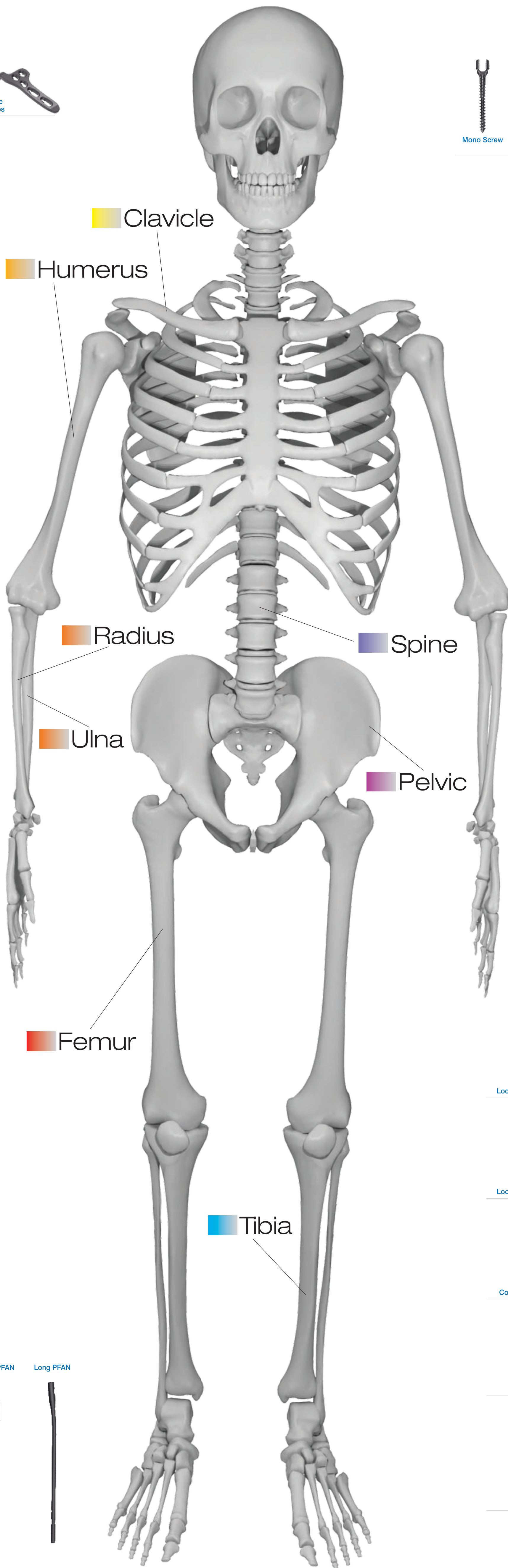
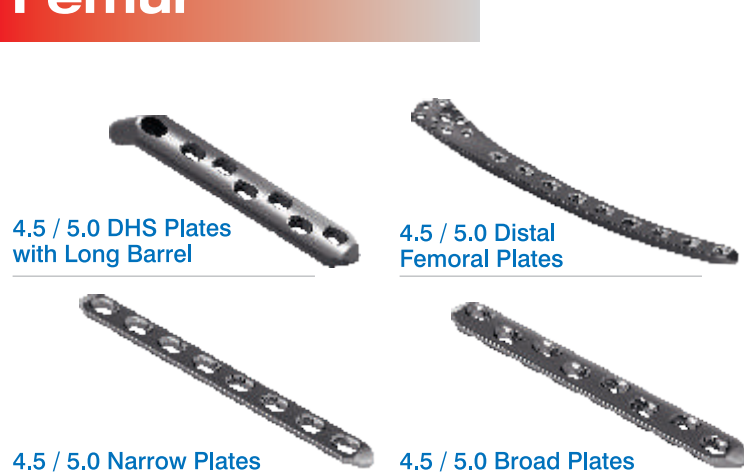
## Pelvic



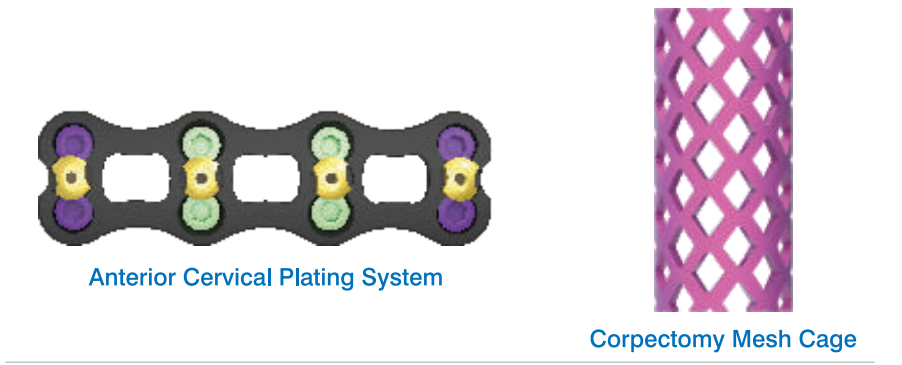
## Radius and Ulna



## Femur



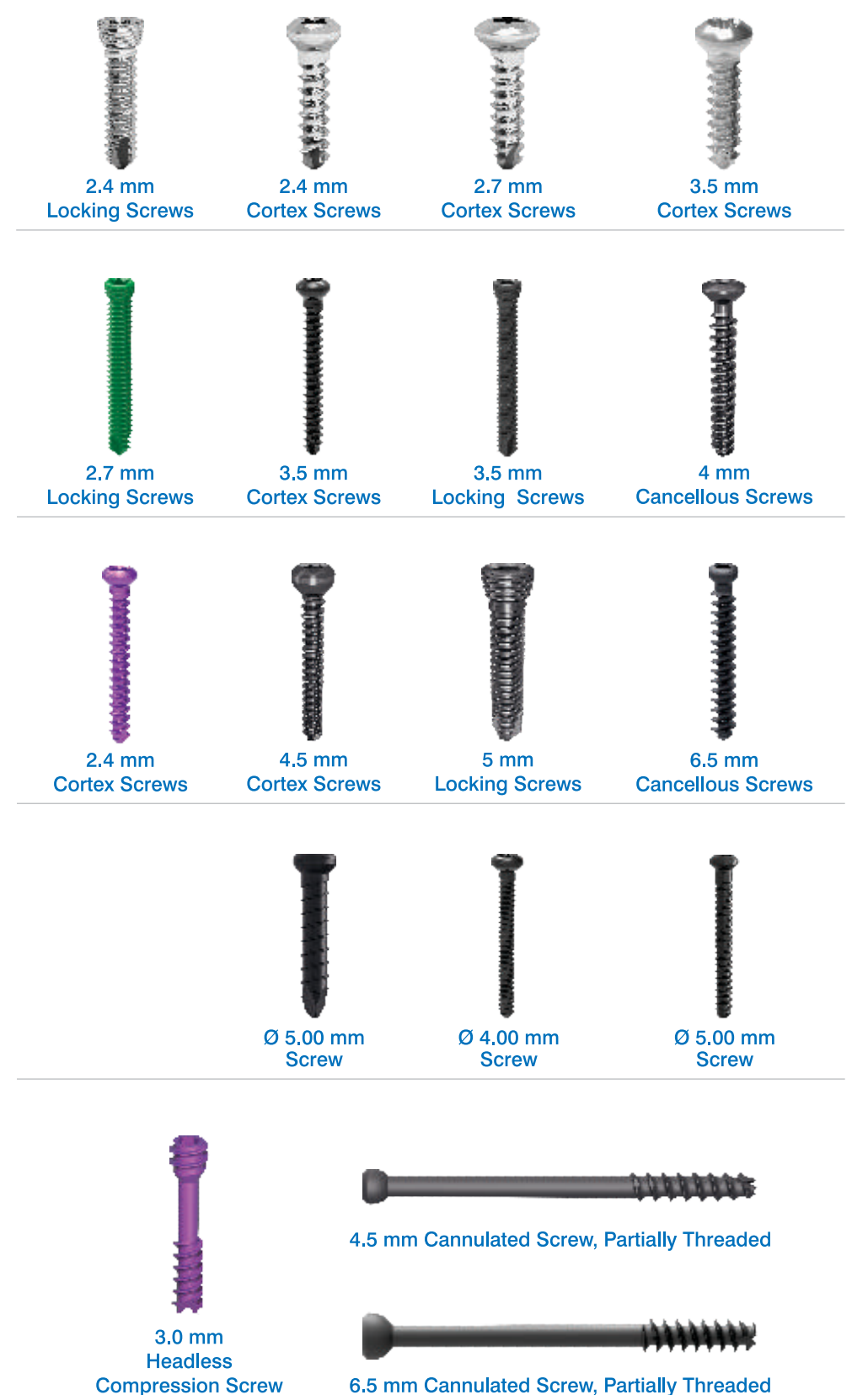
## Spine



## Tibia

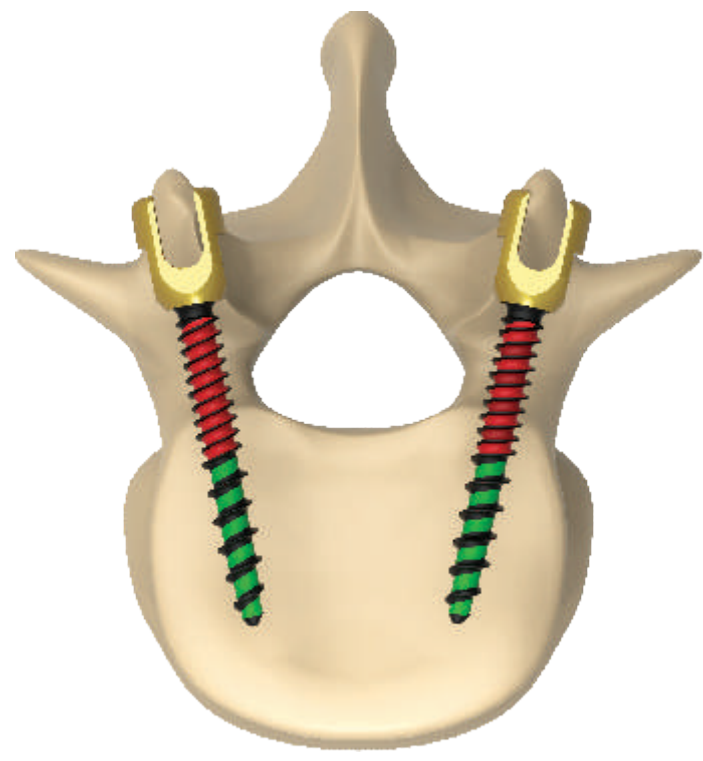


## Screws



**MS-2**

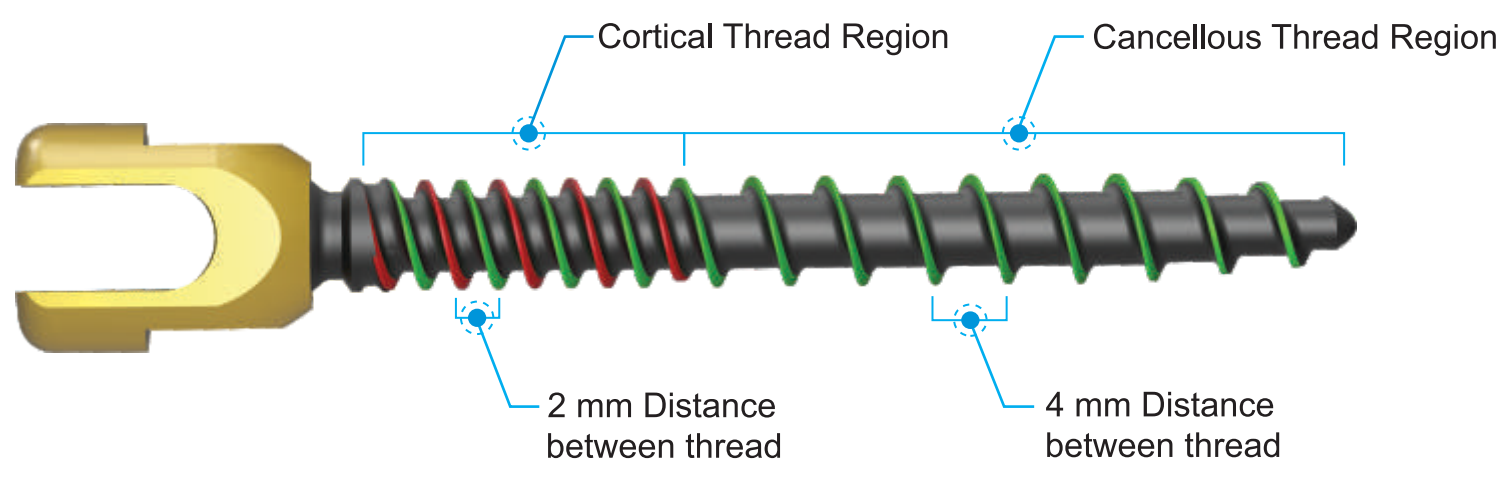
Dual Lead, Top Loading, Pedicle Screw System.



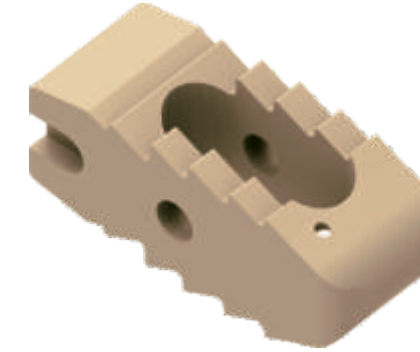
All the Cages are from Radiolucent, Bio-compatible PEEK & Titanium material



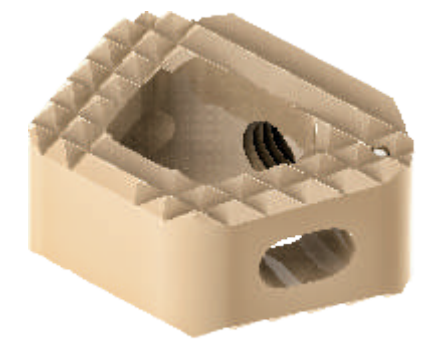
ALC-Tlif Cage



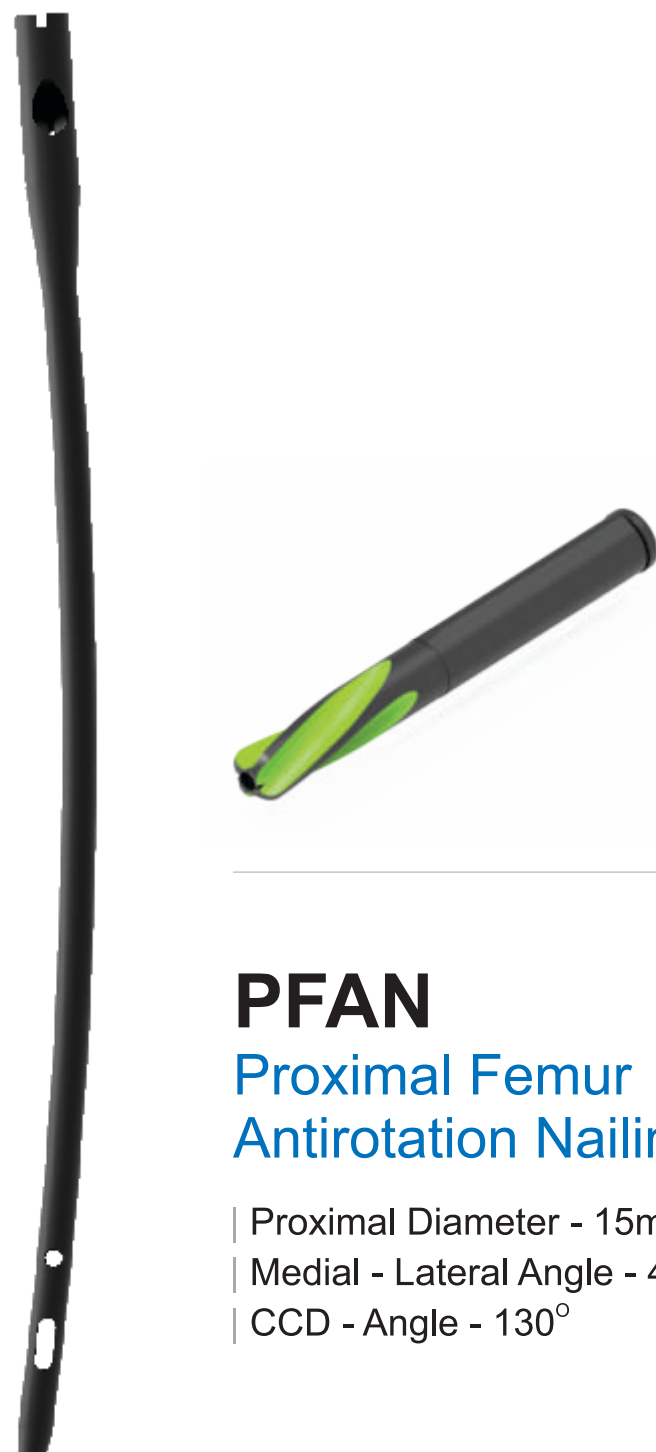
Dual Lead enables Secure Anchorage in cortical and cancellous bone.



ALC - Plif Cage



ACC - Cervical Cage



**PFAN**  
Proximal Femur  
Antirotation Nailing System

Proximal Diameter - 15mm  
Medial - Lateral Angle - 4°  
CCD - Angle - 130°



**ASLP**  
Elbow Plating System

**CLINICAL SOLUTIONS**