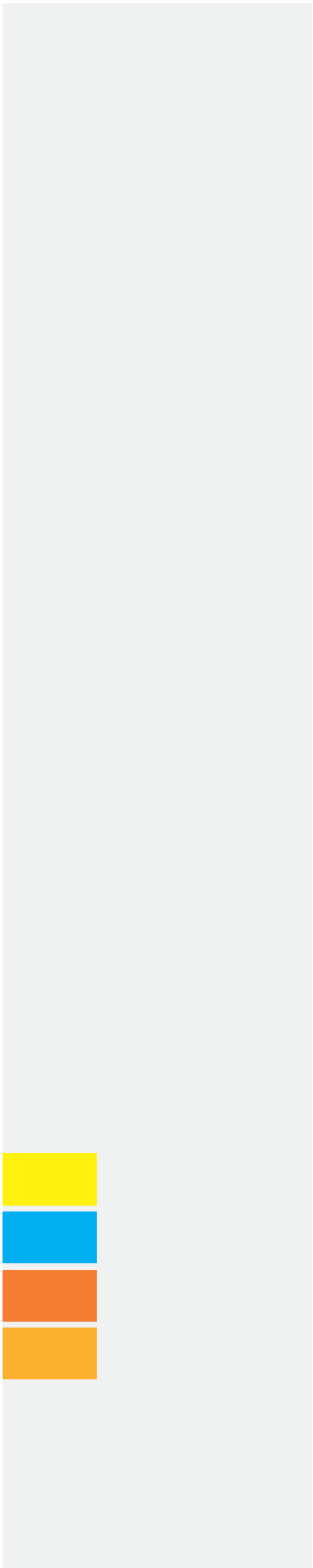


3.5 System Instrument Set (Basic)	1
4.5 System Instrument Set (Basic)	4
Pin & Wire Instrument Set	7
Flexible Reamer Instrument Set	10
Screw Removal Instrument Set	11
DVR Instrument Set	16
Elbow Instrument Set	20
3.5 Locking Instrument Set	22
4.5 Locking Instrument Set	25
4.5 Cannulated Instrument Set	28
6.5 Cannulated Instrument Set	30
Headless Compression Screw Instrument Set	32
PFAN Instrument Set	34
DHS Instrument Set	40



# 3.5 System Instrument Set (Basic)

NLULS-01 Double Universal Drill Guide for  $\varnothing 2.5$  mm Drill bit



NLULS-03 Double Drill Guide for  $\varnothing 2.5$  / 3.5 mm Drill bit



NLULS-02 Double Drill Guide for  $\varnothing 3.0$  / 4.0 mm Drill bit



NLULS-05 Drill Bit 2.5 mm



NLULS-04 Drill Bit 3.0 mm



NLULS-06 Conical Extraction Screw



NLULS-07 Template 10x87 mm



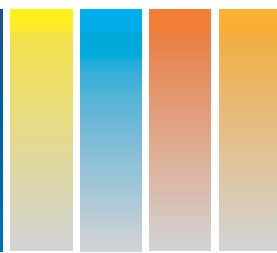
NLULS-08 Template 10x114 mm



NLULS-09 Self-centering Bone Holding Forcep 190 mm



# 3.5 System Instrument Set (Basic)



NLULS-13 Tap Cortex 3.5 mm



NLULS-11 Tap Cancellous 4.0 mm



NLULS-10 Screw driver Hexagonal 2.5 mm



NLULS-12 Hohmann Retractor, Width 15 mm



NLULS-14 Screw Holding Forcep



NLULS-15 Bending Iron L/R



NLULS-16 Hollow Reamer 6 mm



NLULS-17 Ratchet Reduction Forcep with Points



NLULS-18 Ratchet Reduction Forcep with serrated jaw 150 mm



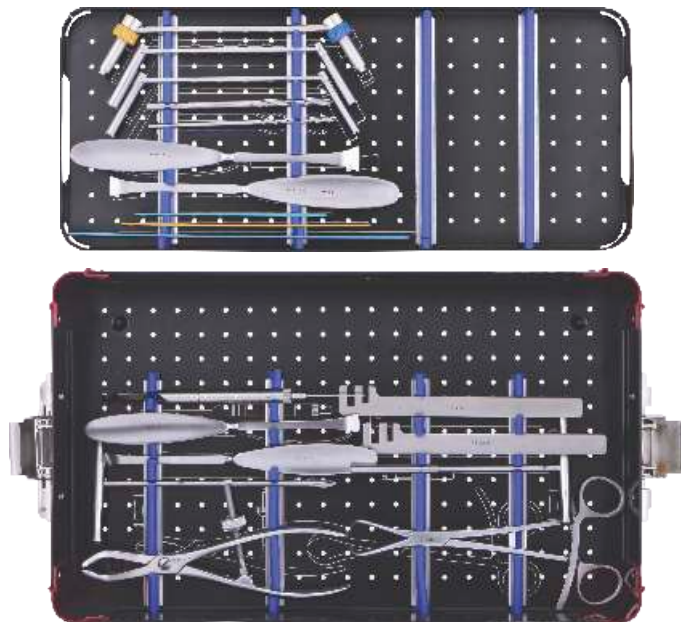
NLULS-19 Countersink for 3.5 mm Cortex screw



NLULS-20 Periosteal Elevator



NLULS-21 Depth Gauge 60 mm



## 4.5 System Instrument Set (Basic)

NLLS-01 Double Universal Drill Guide for  $\varnothing 4.5$  mm Drill bit



NLLS-02 Double Drill Guide for  $\varnothing 3.2 / 4.5$  mm Drill bit



NLLS-03 Double Drill Guide for  $\varnothing 4.5 / 6.5$  mm Drill bit



NLLS-05 Drill Bit 3.2 mm



NLLS-04 Drill Bit 4.5 mm



NLLS-06 Conical Extraction Screw



NLLS-07 Template 12x120 mm



NLLS-08 Template 12x155 mm



NLLS-09 Template 12x212 mm



NLLS-10 Screw driver Hexagonal 4.5 mm Screw



NLLS-13 Tap Cortex 3.5 mm



NLLS-11 Tap Cancellous 4.0 mm



NLLS-12 Hohmann Retractor Width 15 mm



NLLS-14 Screw Holding Forcep



NLLS-15 Bending Iron L/R



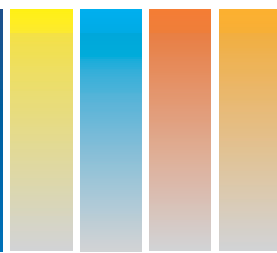
NLLS-16 Hollow Reamer 6 mm



NLLS-17 Reduction Forcep with Points, Broad, Ratchet 180 mm



# 4.5 System Instrument Set (Basic)



NLLS-18 Ratchet Reduction Forcep with Serrated jaw 210 mm



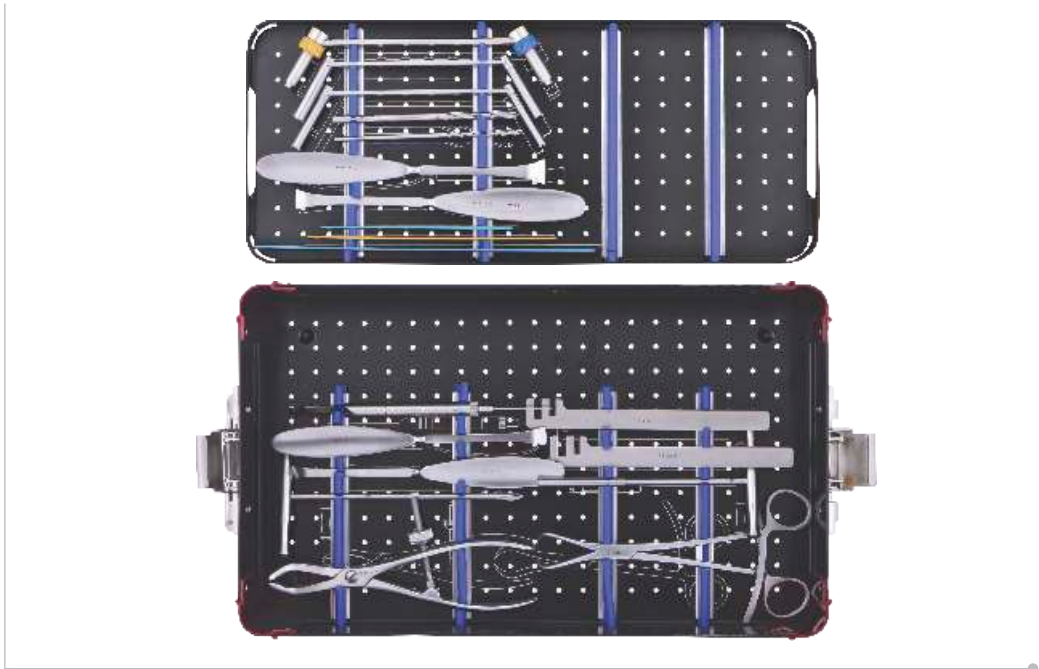
NLLS-19 Countersink for 4.5 mm Cortex Screw



NLLS-20 Periosteal Elevator



NLLS-21 Depth Gauge 90 mm





05901 Wire Passer



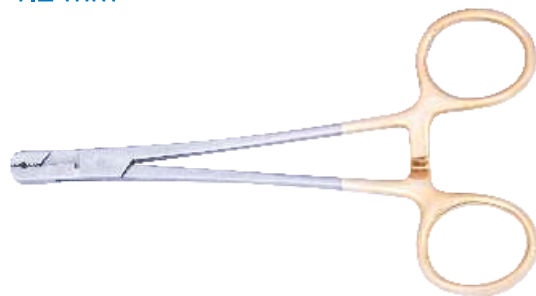
05903 Bending Iron for Kirschner Wires



05904 Wire Tightner with Handle and two pegs 240 mm length



05905 Wire Tightner Forcep 0.8 / 1.0 / 1.2 mm



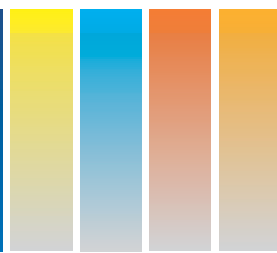
05906 Pin Holding Forcep



05907 Wire Cutter, Small 160 mm length



# Pin & Wire Instrument Set



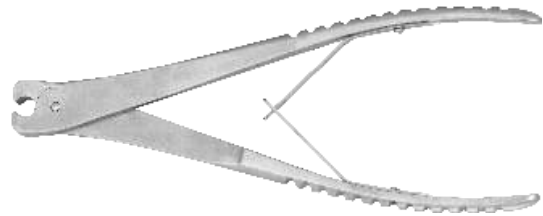
05908 Wire Cutter, Large 230 mm length



05909 Flat-Nosed Parallel Pliers 160 mm length



05910 Front end Wire Cutting Plier, upper to 2.5 mm, 200 mm length



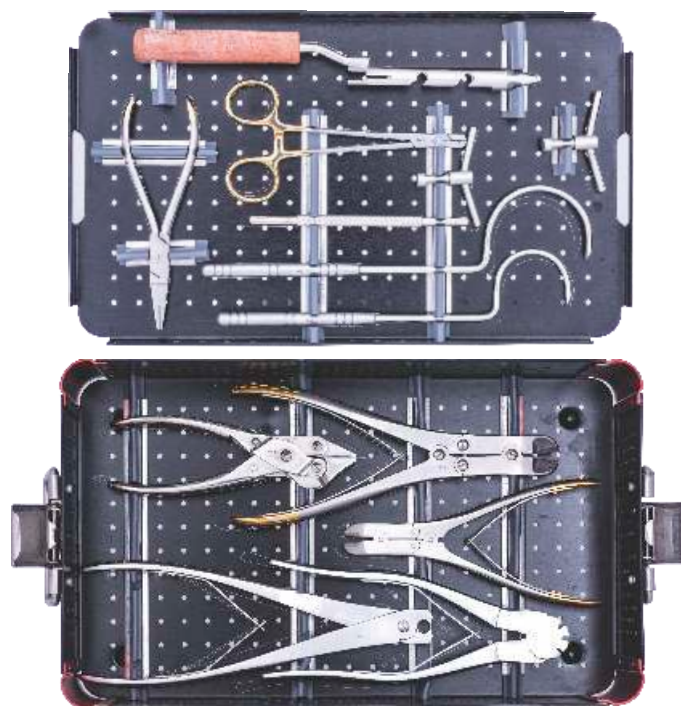
05911 Wire Cutter 1.5 / 2.0 / 3.0 mm, 200 mm length



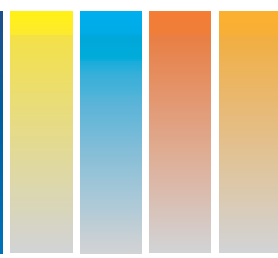
05912 Wire Twister - Tightner



05913 Kirschner Wire Rack 0.8 / 1.0 / 1.2 / 1.5 / 2.0 / 2.5 / 3.0 / 3.5 / 4.0 / 4.5 mm



# Flexible Reamer Instrument Set



06201 T handle Quick Coupling (AO)



06202 Flexible Reamer Shaft  $\varnothing 7.0 \times 480$  mm



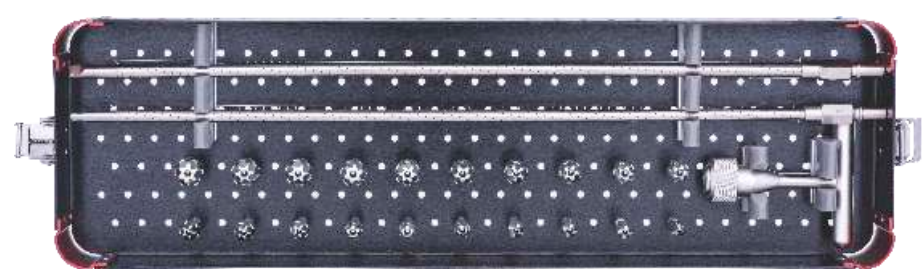
06203 Flexible Reamer Shaft  $\varnothing 8.0 \times 480$  mm



## Various Detachable Reamer Head



Catalogue No.	Reamer Head Size (mm)	Catalogue No.	Reamer Head Size (mm)
06204	$\varnothing 7.5$	06214	$\varnothing 12.5$
06205	$\varnothing 8.0$	06215	$\varnothing 13.0$
06206	$\varnothing 8.5$	06216	$\varnothing 13.5$
06207	$\varnothing 9.0$	06217	$\varnothing 14.0$
06208	$\varnothing 9.5$	06218	$\varnothing 14.5$
06209	$\varnothing 10.0$	06219	$\varnothing 15.0$
06210	$\varnothing 10.5$	06220	$\varnothing 15.5$
06211	$\varnothing 11.0$	06221	$\varnothing 16.0$
06212	$\varnothing 11.5$	06222	$\varnothing 16.6$
06213	$\varnothing 12.0$	06223	$\varnothing 17.0$



# Screw Removal Instrument Set

N-01553 Hollow Reamer 4 mm



N-01552 Hollow Reamer 5 mm



N-01551 Hollow Reamer 6.5 mm



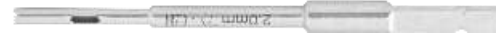
N-01550 Hollow Reamer 8.0 mm



N-01549 Hollow Reamer 10.0 mm



N-01584 Hollow Reamer 2.0 mm



N-01585 Hollow Reamer 2.7 mm



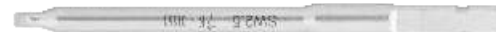
N-01562 Screw driver shaft Hexagonal 1.5 mm



N-01561 Screw driver shaft Hexagonal 2 mm



N-01560 Screw driver shaft Hexagonal 2.5 mm



N-01559 Screw driver shaft Hexagonal 3 mm



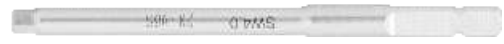
N-01558 Screw driver shaft Hexagonal 3.5 mm



# Screw Removal Instrument Set



N-01557 Screw driver shaft Hexagonal 4 mm



N-01556 Screw driver shaft Hexagonal 4.5 mm



N-01555 Screw driver shaft Hexagonal 5 mm



N-01554 Screw driver shaft Hexagonal 5.5 mm



N-01566 Screw driver shaft square 1.5 mm



N-01567 Screw driver shaft square 1.2 mm



N-01568 Screw driver shaft 3\* 0.5 mm



N-01569 Screw driver shaft 6\* 1.0 mm



N-01570 Screw driver shaft cruciform 2 mm



N-01598 Screw driver shaft triangle



N-01579 Screw driver shaft star 2.0 mm



N-01578 Screw driver shaft star 2.3 mm



N-01577 Screw driver shaft star 2.7 mm



N-01576 Screw driver shaft star 3 mm



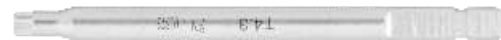
N-01575 Screw driver shaft star 3.4 mm



N-01574 Screw driver shaft star 3.9 mm



N-01573 Screw driver shaft star 4.3 mm



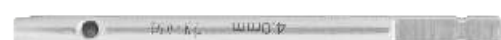
N-01572 Screw driver shaft star 4.5 mm



N-01571 Screw driver shaft star 5.3 mm



N-01563 Extraction Bolt 4 mm



N-01564 Extraction Bolt 5 mm



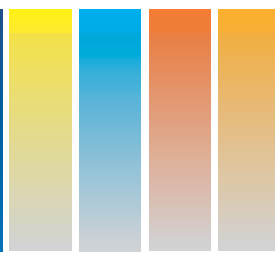
N-01565 Extraction Bolt 6.5 mm



N-01583 Extraction screw Hexagonal 2.5 mm



# Screw Removal Instrument Set



N-01582 Extraction screw Hexagonal 2.7 mm



N-01581 Extraction screw Hexagonal 3.5 mm



N-01580 Extraction screw Hexagonal 4 mm



N-01599 Hexagonal outer nut driver (Small)



N-01600 Hexagonal outer nut driver (Large)



N-01586 Screw driver for Mono pedicle screw



N-01586 A Screw driver for Poly pedicle screw



N-01587 High speed drill bit 4 mm



N-01588 High speed drill bit 5 mm



N-01589 High speed drill bit 6 mm



N-01590 Sharp hook





N-01591 Straight Awl



N-01594 Screw extractor



N-01595 Screw extractor



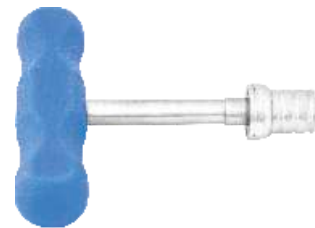
N-01596 Plier for screw removal



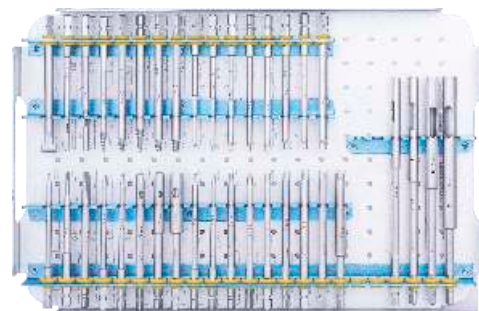
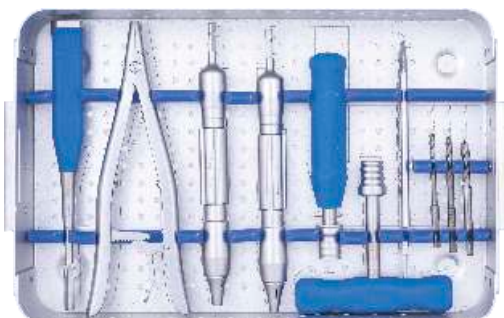
N-01597 Gauge



N-01592 T-handle with AO-Q.C



N-01593 Straight-handle with AO- Q.C



# DVR Instrument Set

08201 Drill Bit  $\varnothing$ 1.8 mm



08202 Drill Bit  $\varnothing$ 2.0 mm



08203 Drill Bit  $\varnothing$ 2.4 mm



08204 Drill Bit  $\varnothing$ 2.7 mm



08205 Guide Pin  $\varnothing$ 1.5 mm



08206 Thread Guide Pin  $\varnothing$ 1.5 mm



08207 Sleeve for Guide Pin  $\varnothing$ 1.5 mm



08208 Locking Drill Sleeve  $\varnothing$ 1.8 mm



08209 Locking Drill Sleeve  $\varnothing$ 2.0 mm



08210 Double Drill Guide for  $\varnothing$ 1.8 / 2.4 mm Drill bit



08211 Double Drill Guide for  $\varnothing$ 2.0 / 2.7 mm Drill bit



08212 Depth Gauge for 2.4 mm Locking Screw



08213 Depth Gauge for 2.7 mm Cortex Screw



08214 Tap for 2.4 mm Locking Screw



08215 Tap for 2.7 mm Cortex Screw



08216 Star head Screw driver Shaft with Screw Holding Sleeve



08217 Star head Screw driver for 2.4 / 2.7 mm Screw



08218 Screw Holding Sleeve for Holding 2.4 / 2.7 mm Cortex Screw



08219 Screw Holding Sleeve for Holding 2.4 mm Locking Screw



08220 T Handle With Quick Coupling



08221 Bone Elevator width 6.5 mm



# DVR Instrument Set



08222 Bone Elevator width 15.5 mm



08223 Elevator (Round)



08224 Elevator (Flat)



08225 Reduction Forcep With Point (Small)



08226 Reduction Forcep With Point



08227 Curved Reduction Forcep

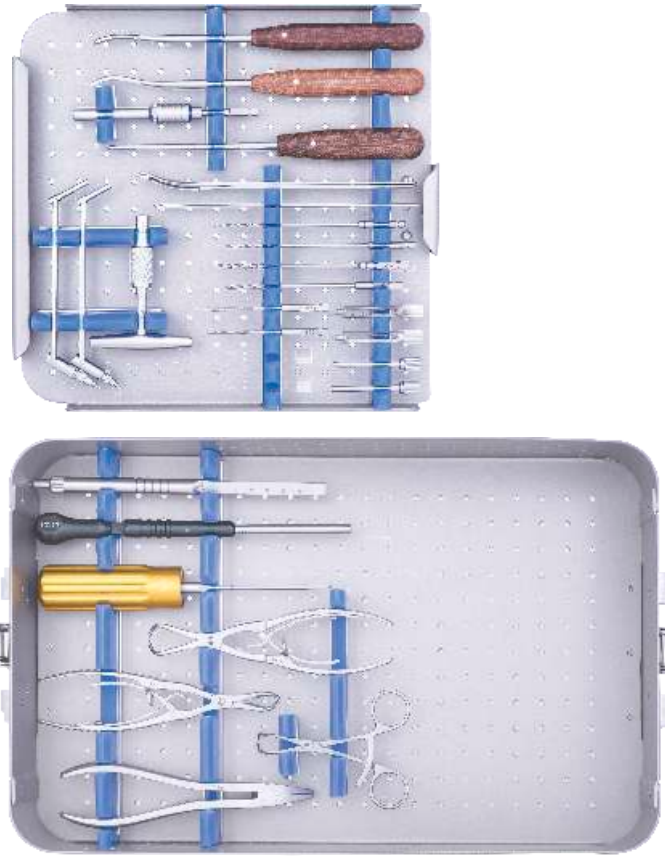


08228 Plate Bending Forcep



08229 Torque Limiting Screw driver 0.8 Nm





# Elbow Instrument Set

05602 Threaded Guide Pin  $\varnothing$ 1.5 mm



05614 Locking drill sleeve  $\varnothing$ 2 mm



05606 Drill Bit  $\varnothing$ 2 mm Quick Coupling for 2.7 mm Locking Screw



05601 Screw driver Star Head for 2.7 mm Locking Screw



05603 Torque Limiting Screw Driver 0.8 Nm



05615 Guide Pin  $\varnothing$ 1.5 mm



05617 Drill Bit  $\varnothing$ 2.5 mm



05613 Drill Bit  $\varnothing$ 2.8 mm



05604 Double Universal Drill Guide for 2.5 / 2.8 mm Drill Bit



05605 Locking Drill sleeve for 2.8 mm Drill Bit



05611 Tap for 3.5 Locking Screw



05612 Tap for 3.5 Cortex Screw



05610 Tap for 4 mm Cancellous Screw



05607 Depth Gauge



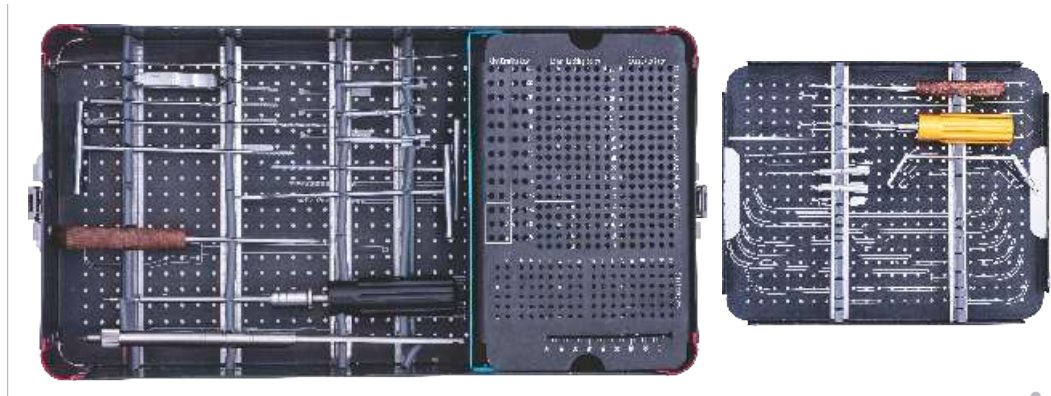
05616 Screw Holding Forcep



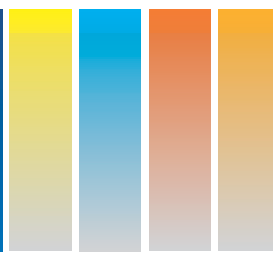
05609 Screw Driver with Screw Holding Sleeve



05603 Torque Limiting Screw Driver 1.5 Nm



## 3.5 Locking Instrument Set



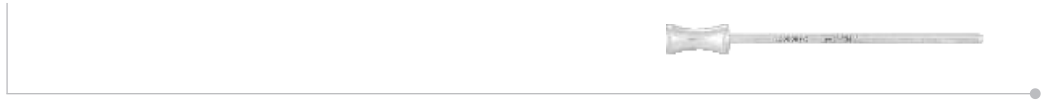
NL-05432 Threaded Guide Pin  $\varnothing$ 1.5 mm



NL-05433 Guide Pin  $\varnothing$ 1.5 mm



NL-05441 Sleeve for Guide Pin  $\varnothing$ 1.5 mm



NL-05425 Drill Bit  $\varnothing$ 2.5 mm



NL-05434 Drill Bit  $\varnothing$ 3.2 mm



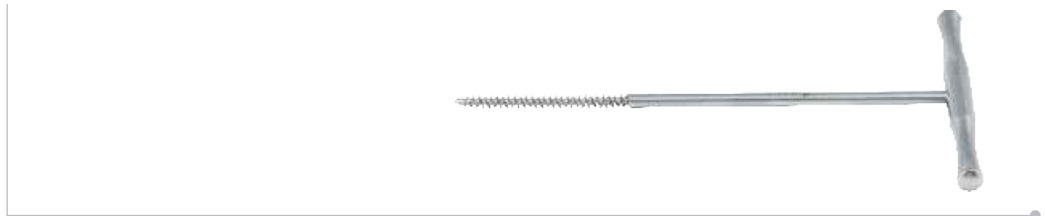
NL-05430 Double Drill Guide for  $\varnothing$ 2.5 / 2.8 mm Drill bit



NL-05444 Locking Drill Sleeve  $\varnothing$ 3.2 mm



NL-05427 Tap for 3.5 mm Locking Screw



NL-05428 Tap for 4.0 mm Cancellous Screw





NL-05429 Spanner  $\varnothing$ 4.5 mm



NL-05437 Depth Gauge 90 mm Length



NL-05431 Screw holding Forcecep



NL-05436 Hexagonal Screw driver with Screw Holding Sleeve



NL-05435 Hexagonal Slotted Screw driver



NL-05438 Torque Limiting Screw driver 1.5 Nm



NL-05440 Tension Device  $\varnothing$ 3.0



NL-05439 Limitator Pin Wrench SW 2.5



NL-05442 Quick Coupling Chuck



## 3.5 Locking Instrument Set

NL-05443 T-handle with Quick Coupling



NL-05426 Extracting Screw SW 2.5 mm



## 4.5 Locking Instrument Set

NL-05405 Guide Pin  $\varnothing$ 2.0 mm



NL-05406 Threaded Guide Pin  $\varnothing$ 2.0 mm



NL-05410 Sleeve for Guide Pin  $\varnothing$ 2.0 mm



NL-05411 Double Drill Guide for  $\varnothing$ 3.2 / 4.3 mm Drill bit



NL-05408 Locking Drill Sleeve  $\varnothing$ 4.3 mm



NL-05402 Drill bit  $\varnothing$ 3.2 mm



NL-05407 Drill bit  $\varnothing$ 4.3 mm



NL-05401 Tap for  $\varnothing$ 5.0 mm Locking Screw



NL-05403 Tap for  $\varnothing$ 4.5 mm Cortex Screw



NL-05412 Depth Gauge 90 mm Length



## 4.5 Locking Instrument Set

NL-05409 Screw Holding Forcep



NL-05414 Screw Driver shaft Hexagonal



NL-05404 Slotted Screw Driver Hexagonal for 4.5 mm Screw



NL-05415 Hexagonal Screw Driver with Screw Holding Sleeve



NL-05413 Torque Limiting Screw Driver 4.0 Nm



NL-05416 Quick Coupling Chuck



NL-05417 T-handle with Quick Coupling

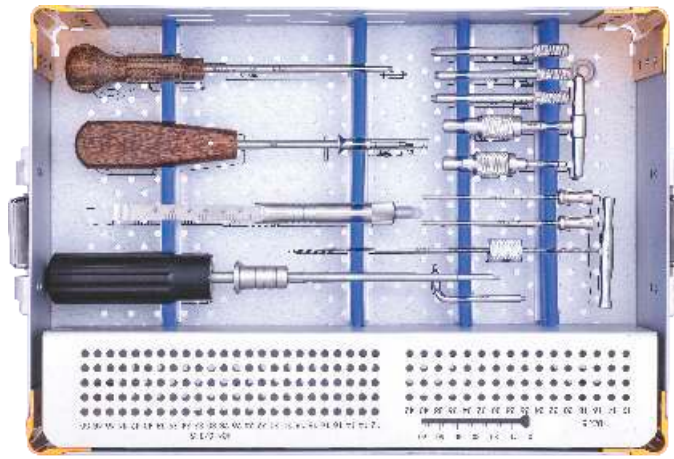
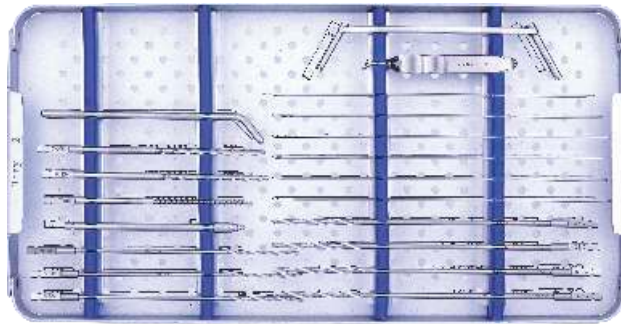


NL-05418 Limitator Pin Wrench



NL-05419 Tension Device  $\varnothing$ 4.0 mm





## 4.5 Cannulated Instrument Set

05709  $\varnothing$ 1.6 mm Trocar sleeve



05703  $\varnothing$ 1.5 mm Thread Guide Pins



05707 Cannulated Drill bit  $\varnothing$ 3.2 mm



05705 Cannulated Screw Measuring Device



05708 Cannulated Tap



05702 Cannulated Countersink



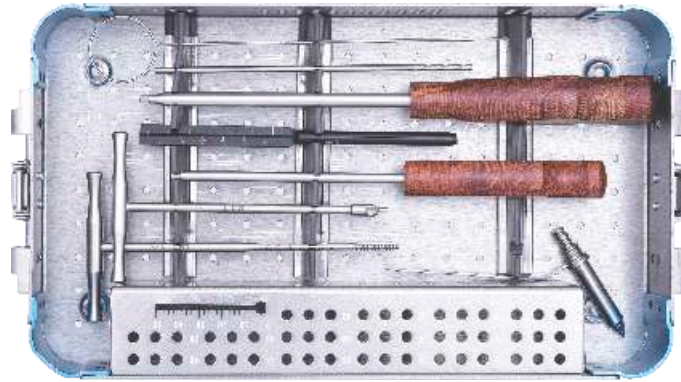
05704 Hexagonal Cannulated Screw Driver



05706 Hexagonal Screw Driver



05701 Cleaning Stylet



## 6.5 Cannulated Instrument Set

05801 Variable angle Guide  $\varnothing$ 2.6 mm



05810 Protection sleeve 12 / 8.5 mm



05814 Adjustable Parallel Guide



05808 Threaded Guide Pin  $\varnothing$ 2.5 mm



05804 Cannulated screw measuring device



05807 Cannulated Drill bit  $\varnothing$ 4.8 mm



05805 Cannulated Tap



05806 Cannulated Countersink





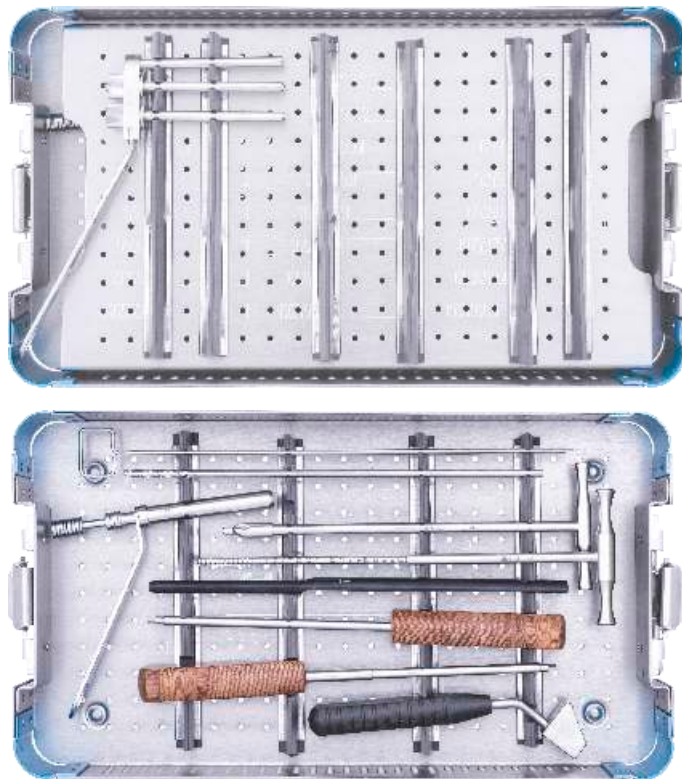
05803 Hexagonal Cannulated Screw Driver



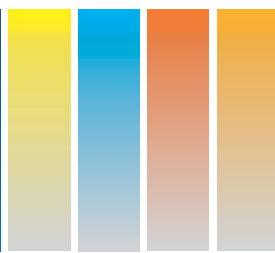
05802 Hexagonal Screw Driver



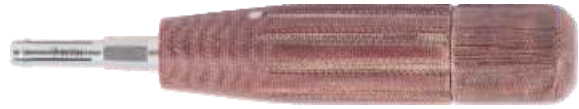
05809 Cleaning Stylet



# Headless Compression Screw Instrument Set



01701 Compression Sleeve Handle



01702 Handle with Quick Coupling



01710 Guide Pin  $\varnothing$ 1 mm



01711 Threaded Guide Pin  $\varnothing$ 1 mm



01707 Cannulated Countersink Drill  $\varnothing$ 2.4 mm



01708 Cannulated Drill Bit  $\varnothing$ 2.4 mm



01705 Hexagonal Screw Driver Shaft



01706 Hexagonal Cannulated Screw Driver Shaft



01709 Direct Measuring Device



01703 Limitator Pin Wrench



01704 Cleaning Stylet



01712 Screw Holding Forceps



01713 Double Drill Guide for  $\varnothing 1.0 / 2.4$  mm Drill bit



01714 Compression Sleeve

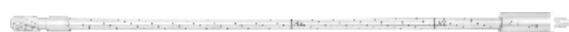


# PFAN Instrument Set

09901 Flexible Reamer  $\varnothing$ 10 mm



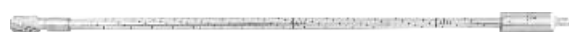
09902 Flexible Reamer  $\varnothing$ 11 mm



09903 Flexible Reamer  $\varnothing$ 12 mm



09904 Flexible Reamer  $\varnothing$ 13 mm



09905 Flexible Reamer  $\varnothing$ 14 mm



09906 Flexible Reamer  $\varnothing$ 15 mm



09907 Flexible Reamer  $\varnothing$ 16 mm



09908 Radiographic Scale



09909 Cannulated Drill bit 15.7 mm



09910 Hammer guide for connecting to the connector



09911 Blade Extracting Device



09912 End cap introducing device



09913 T-handle with spherical head for Extracting Connecting Screw



09914 Screw driver with spherical head for End Cap Removal



09915 Hexagonal Screw driver



09916 Drill bit for PFAN blade



09917 Reamer for PFAN blade



09918 Distal aiming arm for 180 & 220 mm Length Static locking for PFAN



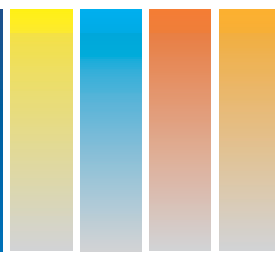
09920 Distal aiming arm for 200 & 240 mm Length Static locking for PFAN



09925 Distal aiming arm for 180-240 L Dynamic locking for PFAN



# PFAN Instrument Set



09919 Direct measuring device for guide wire  $\varnothing 3.2$  mm



09921 Connector on Insertion handle for hammer guide



09922 Impacting Rod for Blade Compressing Device



09923 Ratchet wrench for Hammer guide Rod



09924 Key for PFAN blade



09926 Curved hook for Guiding Flexible Reamer Shaft



09927 Pin wrench



09928 T-handle hexagonal wrench for connecting screw



09929 Connecting screw for PFAN for Insertion handle



09930 Insertion handle for PFAN



09931 Slotted Holder for Locking bolt



09932 Drill sleeve with Trocar for Distal Locking



09933 Drill bit  $\varnothing$ 4 mm



09934 Measuring device for locking bolt



09935 Adapter for Flexible Reaming Shaft



09936 Tissue Protecting Sleeve



09937 Slotted hammer



# PFAN Instrument Set

09938 Hammer



09939 T-handle Jacob Chuck with key for Guide wire for PFAN



09940 Protection sleeve for PFAN



09941 Cannulated Curved Awl for PFAN



09942 Compressing Device for Blade



09943 Guide wire 3.2 mm



09944 Cleaning Stylet



09945 Proximal aiming arm 130° for PFAN blade

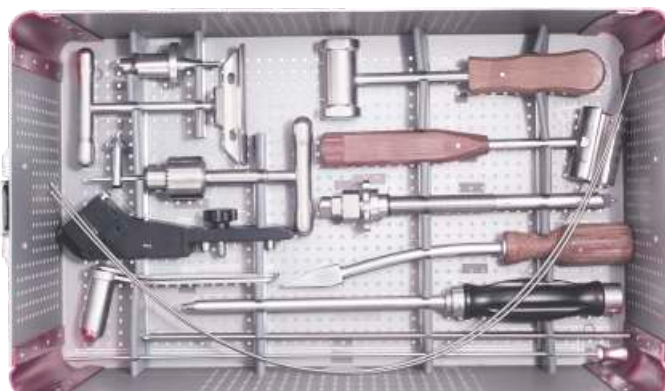
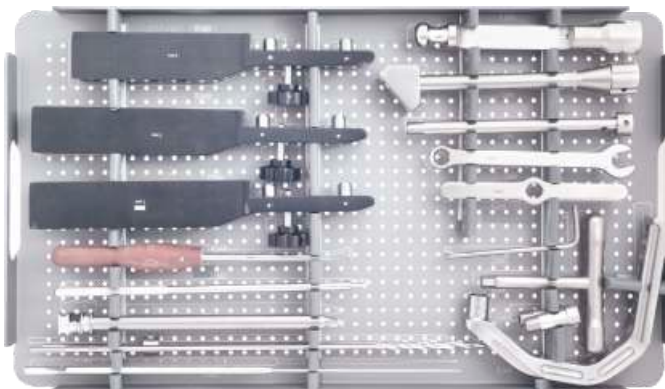
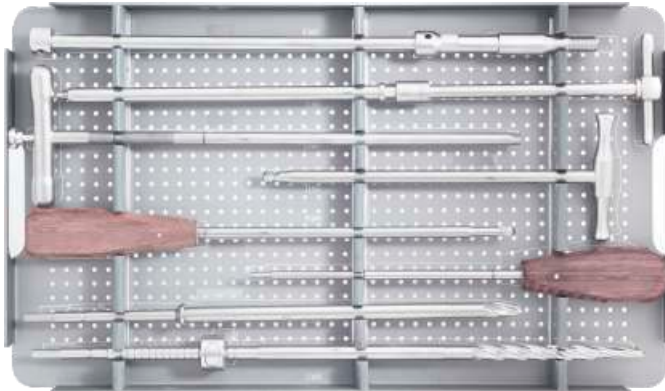
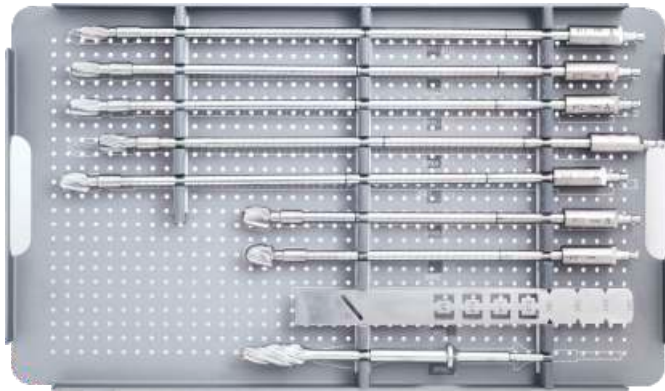


09946 Protection Sleeve, Drill Sleeve with Trocar for PFAN blade

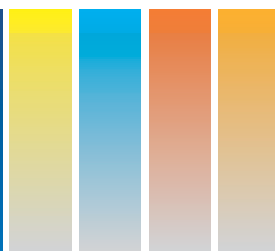




09947 Guide wire



# DHS Instrument Set



N-05501 Double Drill Guide for 4.5 / 3.2 mm Drill bit



N-05502 Double Drill Guide for 4.5 / 6.5 mm Drill bit



N-05503 DCS Double Universal Drill Sleeve ø3.2 mm



N-05504 Tap 12.5 mm dia for DHS screw



N-05505 Drill Bit ø3.2 mm



N-05506 Drill Bit ø4.5 mm



N-05507 Tap for ø4.5 mm Cortex Screw



N-05508 Tap for ø6.5 mm Cancellous Screw



N-05509 Direct Measuring Device



N-05510 Tap for DHS Screw ø12 mm



N-05511 Threaded Guide Pin  $\varnothing$ 2.5 mm



N-05512 95° DCS Drill guide



N-05513 DCS Triple Reamer main



N-05514 DHS Triple Reamer main



N-05515 DHS Angle guide



N-05516 DHS / DCS impactor



N-05517 T-handle



N-05518 Hexagonal Screw Driver with Screw Holding Sleeve



# DHS Instrument Set

N-05519 DHS / DCS wrench with Long centering Sleeve & coupling screw main



N-05520 DHS / DCS wrench with short centering Sleeve & coupling screw main



N-05521 Depth Gauge 90 mm



N-05522 Locking Drill Sleeve 4.3 mm



N-05523 Torque Limiting Screw driver 4.0 Nm

